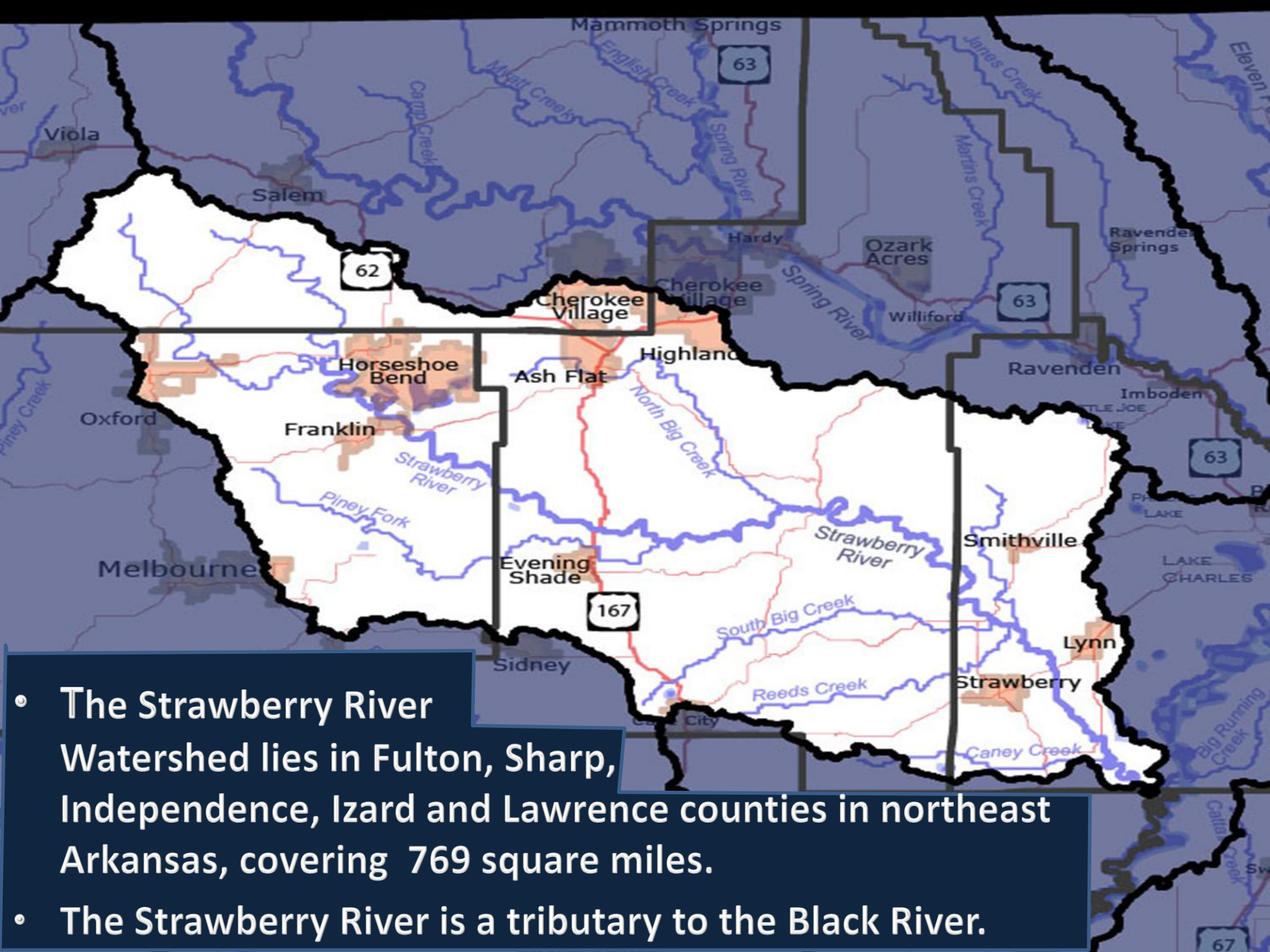


STRAWBERRY RIVER IMPROVEMENT PROJECT



STRAWBERRY RIVER WATERSHED
SHARP COUNTY

JULY 1, 2011 – JUNE 30, 2013



- The Strawberry River Watershed lies in Fulton, Sharp, Independence, Izard and Lawrence counties in northeast Arkansas, covering 769 square miles.
- The Strawberry River is a tributary to the Black River.

STRAWBERRY RIVER WATERSHED

LAND USE

Forest 56.5%
Grassland 35.2%
Water .4%
Urban .1%
Suburban 1.4%
Cropland 1.8%



The Problem:



- **Strawberry River is on the 303(d) list citing pathogens and siltation as the cause.**
- **Agriculture activities within the watershed are thought to be the major source of nutrient runoff in the watershed.**
- **Most of the farms in this watershed are specializing in livestock production.**

The Solution:

- Providing technical assistance and equipment for rent that allows for economical implementation of practices that are both beneficial to the water source and the landowner.



The Solution:

Educating landowners about the use of best management practices.



BEST MANAGEMENT PRACTICES: BRUSH MANAGEMENT AND PEST MANAGEMENT



480 ACRES
TREATED FOR
BRUSH/PEST
MANAGEMENT

BEST MANAGEMENT PRACTICES: CROSS FENCING

OVER 81,000 FEET INSTALLED



BEST MANAGEMENT PRACTICES: WATER FACILITIES

10 Installed



Best Management Practices: Heavy Use Areas

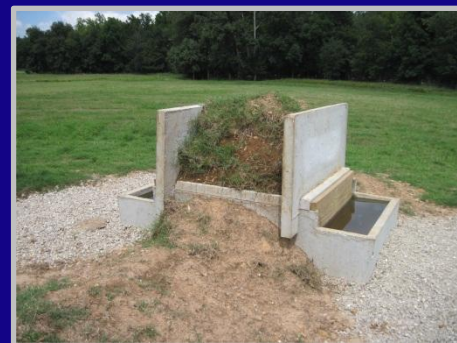
Over 2,250 square ft. Installed



BEST MANAGEMENT PRACTICES: PONDS



2 Ponds
completed



BEST MANAGEMENT PRACTICES: PASTURE ESTABLISHMENT

No-Till Drill



CONSERVATION PLANNING: 125 PLANS WRITTEN WITH 57 CONTRACTS



ANY QUESTIONS?

